

Parkmore Stage 3

Verified Photomontages & Computer-generated imagery (CGIs)



NOTES AND METHODOLOGY

Parkmore Stage 3

Prepared by Digital Dimensions

Issue Date	13/09/24	10/10/24	19/02/25	06/03/25	07/03/25	
Revision	-	A	B	C	D	

PROFILE

Digital Dimensions are specialists in computer generated visualisations for all forms of planning applications. The company was established in 2000 by John Healy and Jim Manning in Dublin, Ireland. Digital Dimensions is one of Ireland’s leading architectural visualisation companies with 20+ years of experience covering a wide range of solutions in the areas of architectural visualisation, environmental design and digital media.

Method Statement - Photomontage production using guidance in The Landscape Institute TGN-06-19 Visual Representation of Development Proposals.

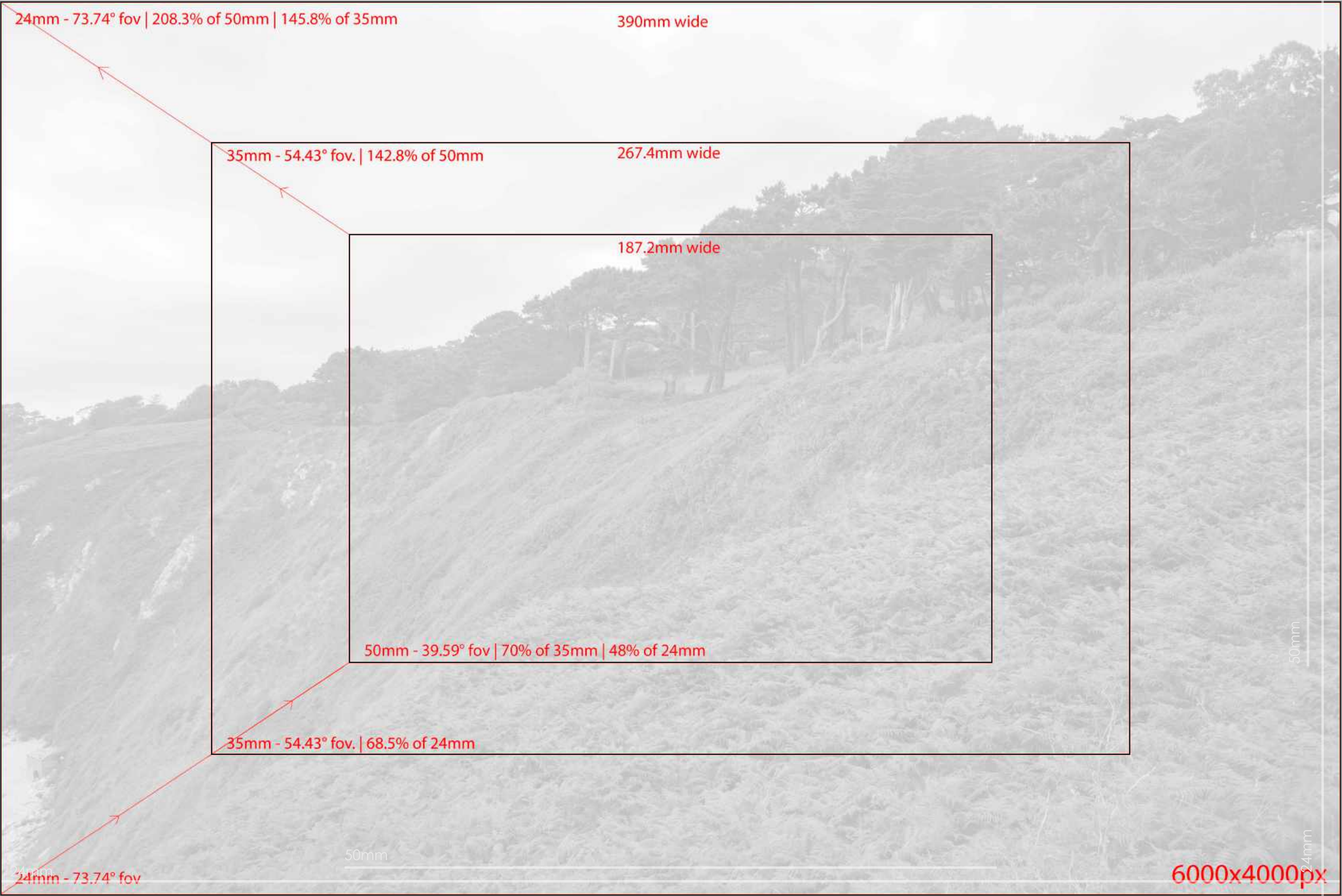
1. Photographs are taken from locations as advised by the planning consultant with a full frame SLR digital camera and prime lens. Photographs are taken using the most appropriate combination of lens focal lengths to ensure that the field of view covers the proposed scheme environment or landscape context. The photographs are taken horizontally with a survey level attached to the camera. The photographic positions are marked (for later surveying), the height of the camera and the focal length of the image recorded.
2. In each photograph, a minimum of 3no. visible fixed points are marked for surveying. These are control points for model alignment within the photograph. All surveying is carried out by a qualified topographical surveyor using Total Station / GPS devices.
3. The photographic positions and the control points are geographically surveyed and this survey is tied in to the site topographical survey supplied by the Architect / client.
4. The buildings are accurately modelled in 3D cad software from cad drawings or BIM model supplied by the Architect. Material finishes are applied to the 3D model and scene element are place like trees and planting to represent the proposed landscaping.
5. Virtual 3D cameras are positioned according to the survey co-ordinates and the focal length is set to match the photograph. Pitch and rotation are adjusted using the survey control points to align the virtual camera to the photograph. Lighting is set to match the time of day the photograph is taken.
6. The proposed development is output from the 3D software using this camera and the image is then blended with the original photograph to give an accurate image of what the proposed development will look like in its proposed setting.
7. In the event of the permitted development not being visible, the massing of the proposed will be outlined in red. Where there are other developments in the proximity of the proposed development with permission and the cumulative effect needs to be considered, then an additional view will be included with the massing of the adjacent permitted developments shown. Where the adjacent developments are within the field of view but not visible, they will be outlined with a different colour and a legend provided with a reference for each development..
8. The document contains:
 - a. Site location map with view locations plotted.
 - b. Photomontage sheets with existing or proposed conditions.
 - c. Reference information including field of view/focal length, range to site / development, date of photograph.
 - d. The existing view with the date the photograph was taken.
 - e. The proposed photomontage (or scheme outline as appropriate)



View Location Map

This map is for view location purposes only. Please refer to Architects drawings for site layout and redline boundary.

- Photomontages
- CGI views



< 24mm / 73.7° < 35mm / 54.4° < 50mm / 39.6° Lens Information: Focal Length / Field of View 50mm / 39.6° > 35mm / 54.4° > 24mm / 73.7° >

Location	Description	Photography Date	Field of view	35mm equivalent	Distance to site boundary	Camera model	Reference
						Canon EOS 5DS	



Summer View of existing

< 24mm / 73.7° < 35mm / 54.4° < 50mm / 39.6° Lens Information: Focal Length / Field of View 50mm / 39.6° > 35mm / 54.4° > 24mm / 73.7° >

Location	Description	Photography Date	Field of view	35mm equivalent	Distance to site boundary	Camera model	Reference
View 1 Existing	Looking east from jnct Naas Rd & Long Mile Road	12/08/24	73.7°	24mm	450m	Canon EOS 5DS	7345



Summer View of proposed

< 24mm / 73.7° < 35mm / 54.4° < 50mm / 39.6° Lens Information: Focal Length / Field of View 50mm / 39.6° > 35mm / 54.4° > 24mm / 73.7° >

Location	Description	Photography Date	Field of view	35mm equivalent	Distance to site boundary	Camera model	Reference
View 1 Proposed	Looking east from jnct Naas Rd & Long Mile Road	12/08/24	73.7°	24mm	450m	Canon EOS 5DS	7345



Summer View depicting massing of future CITY EDGE PROJECT

< 24mm / 73.7° < 35mm / 54.4° < 50mm / 39.6° Lens Information: Focal Length / Field of View 50mm / 39.6° > 35mm / 54.4° > 24mm / 73.7° >

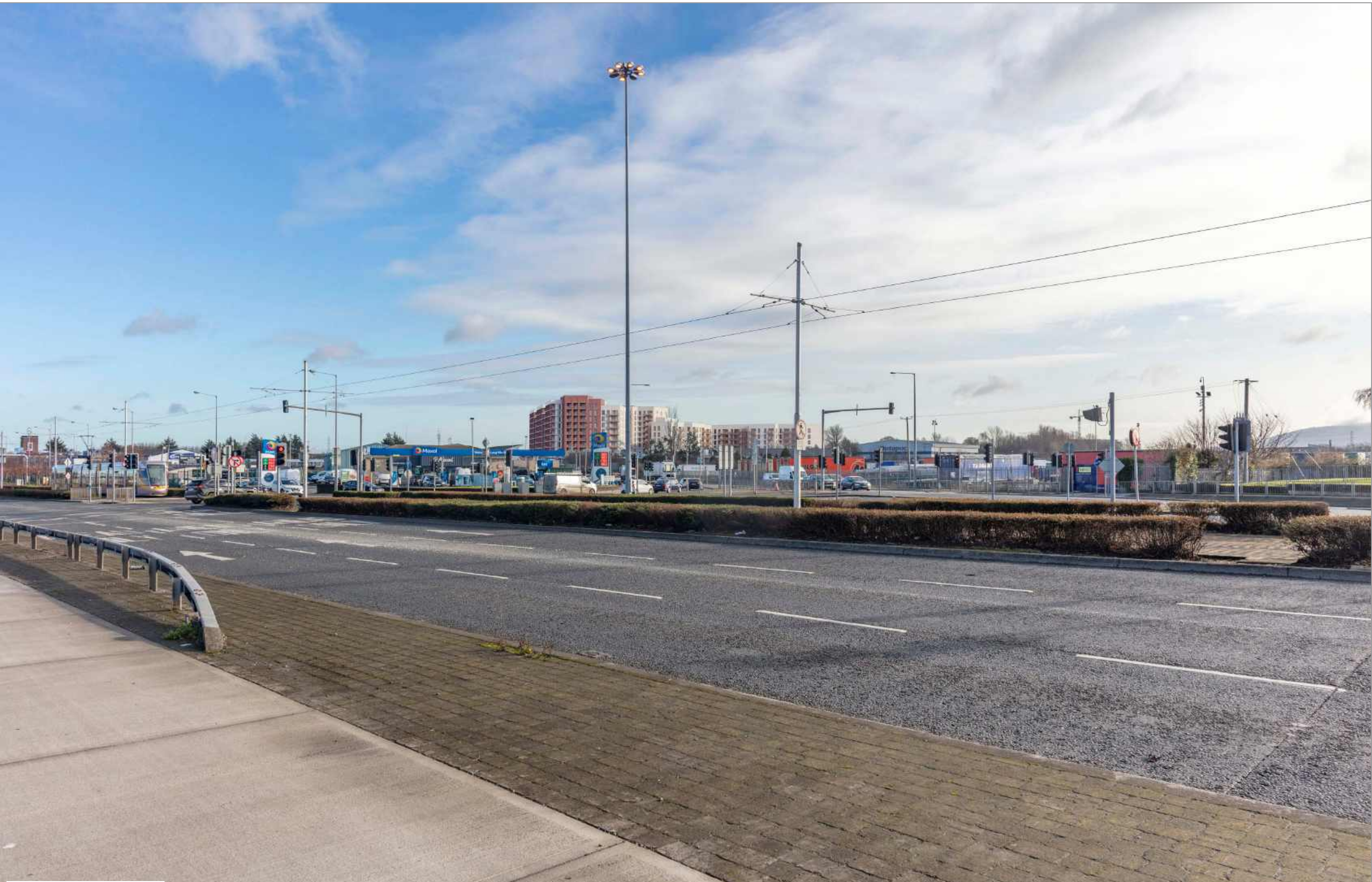
Location	Description	Photography Date	Field of view	35mm equivalent	Distance to site boundary	Camera model	Reference
V01 Cumulative	Looking east from jnct Naas Rd & Long Mile Road	12/08/24	73.7°	24mm	450m	Canon EOS 5DS	7345



Winter View of existing

< 24mm / 73.7° < 35mm / 54.4° < 50mm / 39.6° Lens Information: Focal Length / Field of View 50mm / 39.6° > 35mm / 54.4° > 24mm / 73.7° >

Location	Description	Photography Date	Field of view	35mm equivalent	Distance to site boundary	Camera model	Reference
View 1 Existing	Looking east from jnct Naas Rd & Long Mile Road	29/01/25	73.7°	24mm	450m	Canon EOS 5DS	1589



Winter View of proposed

< 24mm / 73.7° < 35mm / 54.4° < 50mm / 39.6° Lens Information: Focal Length / Field of View 50mm / 39.6° > 35mm / 54.4° > 24mm / 73.7° >

Location	Description	Photography Date	Field of view	35mm equivalent	Distance to site boundary	Camera model	Reference
View 1 Proposed	Looking east from jnct Naas Rd & Long Mile Road	29/01/25	73.7°	24mm	450m	Canon EOS 5DS	1589



Winter View depicting massing of future CITY EDGE PROJECT

< 24mm / 73.7° < 35mm / 54.4° < 50mm / 39.6° Lens Information: Focal Length / Field of View 50mm / 39.6° > 35mm / 54.4° > 24mm / 73.7° >

Location	Description	Photography Date	Field of view	35mm equivalent	Distance to site boundary	Camera model	Reference
V01 Cumulative	Looking east from jnct Naas Rd & Long Mile Road	29/01/25	73.7°	24mm	450m	Canon EOS 5DS	1589



Summer View of existing

< 24mm / 73.7° < 35mm / 54.4° < 50mm / 39.6° Lens Information: Focal Length / Field of View 50mm / 39.6° > 35mm / 54.4° > 24mm / 73.7° >

Location	Description	Photography Date	Field of view	35mm equivalent	Distance to site boundary	Camera model	Reference
View 2 Existing	Looking Sth East from Naas Rd opp Evra motors	12/08/24	73.7°	24mm	290m	Canon EOS 5DS	7350



Summer View of proposed

< 24mm / 73.7° < 35mm / 54.4° < 50mm / 39.6° Lens Information: Focal Length / Field of View 50mm / 39.6° > 35mm / 54.4° > 24mm / 73.7° >

Location	Description	Photography Date	Field of view	35mm equivalent	Distance to site boundary	Camera model	Reference
View 2 Proposed	Looking Sth East from Naas Rd opp Evra motors	12/08/24	73.7°	24mm	290m	Canon EOS 5DS	7350



Summer View depicting massing of future CITY EDGE PROJECT

< 24mm / 73.7° | < 35mm / 54.4° | < 50mm / 39.6° | Lens Information: Focal Length / Field of View | 50mm / 39.6° > | 35mm / 54.4° > | 24mm / 73.7° >

Location	Description	Photography Date	Field of view	35mm equivalent	Distance to site boundary	Camera model	Reference
V02 Cumulative	Looking Sth East from Naas Rd opp Evra motors	12/08/24	73.7°	24mm	290m	Canon EOS 5DS	7350



Winter View of existing

< 24mm / 73.7° < 35mm / 54.4° < 50mm / 39.6° Lens Information: Focal Length / Field of View 50mm / 39.6° > 35mm / 54.4° > 24mm / 73.7° >

Location	Description	Photography Date	Field of view	35mm equivalent	Distance to site boundary	Camera model	Reference
View 2 Existing	Looking Sth East from Naas Rd opp Evra motors	29/01/25	73.7°	24mm	290m	Canon EOS 5DS	1596



Winter View of proposed

< 24mm / 73.7° < 35mm / 54.4° < 50mm / 39.6° Lens Information: Focal Length / Field of View 50mm / 39.6° > 35mm / 54.4° > 24mm / 73.7° >

Location	Description	Photography Date	Field of view	35mm equivalent	Distance to site boundary	Camera model	Reference
View 2 Proposed	Looking Sth East from Naas Rd opp Evra motors	29/01/25	73.7°	24mm	290m	Canon EOS 5DS	1596



Winter View depicting massing of future CITY EDGE PROJECT

< 24mm / 73.7° < 35mm / 54.4° < 50mm / 39.6° Lens Information: Focal Length / Field of View 50mm / 39.6° > 35mm / 54.4° > 24mm / 73.7° >

Location	Description	Photography Date	Field of view	35mm equivalent	Distance to site boundary	Camera model	Reference
V02 Cumulative	Looking Sth East from Naas Rd opp Evra motors	29/01/25	73.7°	24mm	290m	Canon EOS 5DS	1596



Summer View of existing

< 24mm / 73.7° < 35mm / 54.4° < 50mm / 39.6° Lens Information: Focal Length / Field of View 50mm / 39.6° > 35mm / 54.4° > 24mm / 73.7° >

Location	Description	Photography Date	Field of view	35mm equivalent	Distance to site boundary	Camera model	Reference
View 3 Existing	Looking Sth West from jctn Naas Rd & Walkinstown Ave.	12/08/24	73.7°	24mm	410m	Canon EOS 5DS	7355



Summer View of proposed

< 24mm / 73.7° < 35mm / 54.4° < 50mm / 39.6° Lens Information: Focal Length / Field of View 50mm / 39.6° > 35mm / 54.4° > 24mm / 73.7° >

Location	Description	Photography Date	Field of view	35mm equivalent	Distance to site boundary	Camera model	Reference
View 3 Proposed	Looking Sth West from jctn Naas Rd & Walkinstown Ave.	12/08/24	73.7°	24mm	410m	Canon EOS 5DS	7355



Winter View of existing

< 24mm / 73.7° | < 35mm / 54.4° | < 50mm / 39.6° | Lens Information: Focal Length / Field of View | 50mm / 39.6° > | 35mm / 54.4° > | 24mm / 73.7° > |

Location	Description	Photography Date	Field of view	35mm equivalent	Distance to site boundary	Camera model	Reference
View 3 Existing	Looking Sth West from jctn Naas Rd & Walkinstown Ave.	29/01/25	73.7°	24mm	410m	Canon EOS 5DS	1608



Winter View of proposed

< 24mm / 73.7° | < 35mm / 54.4° | < 50mm / 39.6° | Lens Information: Focal Length / Field of View | 50mm / 39.6° > | 35mm / 54.4° > | 24mm / 73.7° > |

Location	Description	Photography Date	Field of view	35mm equivalent	Distance to site boundary	Camera model	Reference
View 3 Proposed	Looking Sth West from jctn Naas Rd & Walkinstown Ave.	29/01/25	73.7°	24mm	410m	Canon EOS 5DS	1608



Summer View of existing

< 24mm / 73.7° < 35mm / 54.4° < 50mm / 39.6° Lens Information: Focal Length / Field of View 50mm / 39.6° > 35mm / 54.4° > 24mm / 73.7° > |

Location	Description	Photography Date	Field of view	35mm equivalent	Distance to site boundary	Camera model	Reference
View 4 Existing	Looking West from Slievebloom Park/Lansdowne Gate.	12/08/24	73.7°	24mm	950m	Canon EOS 5DS	7409



Summer View of proposed

< 24mm / 73.7° | < 35mm / 54.4° | < 50mm / 39.6° | Lens Information: Focal Length / Field of View | 50mm / 39.6° > | 35mm / 54.4° > | 24mm / 73.7° > |

Location	Description	Photography Date	Field of view	35mm equivalent	Distance to site boundary	Camera model	Reference
View 4 Proposed	Looking West from Slievebloom Park/Lansdowne Gate.	12/08/24	73.7°	24mm	950m	Canon EOS 5DS	7409



Winter View of existing

< 24mm / 73.7° < 35mm / 54.4° < 50mm / 39.6° Lens Information: Focal Length / Field of View 50mm / 39.6° > 35mm / 54.4° > 24mm / 73.7° >

Location	Description	Photography Date	Field of view	35mm equivalent	Distance to site boundary	Camera model	Reference
View 4 Existing	Looking West from Slievebloom Park/Lansdowne Gate.	29/01/25	73.7°	24mm	950m	Canon EOS 5DS	1539



Winter View of proposed

< 24mm / 73.7° < 35mm / 54.4° < 50mm / 39.6° Lens Information: Focal Length / Field of View 50mm / 39.6° > 35mm / 54.4° > 24mm / 73.7° >

Location	Description	Photography Date	Field of view	35mm equivalent	Distance to site boundary	Camera model	Reference
View 4 Proposed	Looking West from Slievebloom Park/Lansdowne Gate.	29/01/25	73.7°	24mm	950m	Canon EOS 5DS	1539



Summer View of existing

< 24mm / 73.7° | < 35mm / 54.4° | < 50mm / 39.6° | Lens Information: Focal Length / Field of View | 50mm / 39.6° > | 35mm / 54.4° > | 24mm / 73.7° >

Location	Description	Photography Date	Field of view	35mm equivalent	Distance to site boundary	Camera model	Reference
View 5 Existing	Looking Sth East from Long Mile Rd / Robinhood Rd	12/08/24	73.7°	24mm	60m	Canon EOS 5DS	7403



Summer View of proposed

< 24mm / 73.7° < 35mm / 54.4° < 50mm / 39.6° Lens Information: Focal Length / Field of View 50mm / 39.6° > 35mm / 54.4° > 24mm / 73.7° >

Location	Description	Photography Date	Field of view	35mm equivalent	Distance to site boundary	Camera model	Reference
View 5 Proposed	Looking Sth East from Long Mile Rd / Robinhood Rd	12/08/24	73.7°	24mm	60m	Canon EOS 5DS	7403



Winter View of existing

< 24mm / 73.7° | < 35mm / 54.4° | < 50mm / 39.6° | Lens Information: Focal Length / Field of View | 50mm / 39.6° > | 35mm / 54.4° > | 24mm / 73.7° > |

Location	Description	Photography Date	Field of view	35mm equivalent	Distance to site boundary	Camera model	Reference
View 5 Existing	Looking Sth East from Long Mile Rd / Robinhood Rd	29/01/25	73.7°	24mm	60m	Canon EOS 5DS	1581



Winter View of proposed

< 24mm / 73.7° | < 35mm / 54.4° | < 50mm / 39.6° | Lens Information: Focal Length / Field of View | 50mm / 39.6° > | 35mm / 54.4° > | 24mm / 73.7° >

Location	Description	Photography Date	Field of view	35mm equivalent	Distance to site boundary	Camera model	Reference
View 5 Proposed	Looking Sth East from Long Mile Rd / Robinhood Rd	29/01/25	73.7°	24mm	60m	Canon EOS 5DS	1581



Summer View of existing

< 24mm / 73.7° < 35mm / 54.4° < 50mm / 39.6° Lens Information: Focal Length / Field of View 50mm / 39.6° > 35mm / 54.4° > 24mm / 73.7° >

Location	Description	Photography Date	Field of view	35mm equivalent	Distance to site boundary	Camera model	Reference
View 6 Existing	Looking West from Walkinstown Green	12/08/24	73.7°	24mm	680m	Canon EOS 5DS	7312



Summer View of proposed

< 24mm / 73.7° | < 35mm / 54.4° | < 50mm / 39.6° | Lens Information: Focal Length / Field of View | 50mm / 39.6° > | 35mm / 54.4° > | 24mm / 73.7° > |

Location	Description	Photography Date	Field of view	35mm equivalent	Distance to site boundary	Camera model	Reference
View 6 Proposed	Looking West from Walkinstown Green	12/08/24	73.7°	24mm	680m	Canon EOS 5DS	7312



< 24mm / 73.7°

< 35mm / 54.4°

< 50mm / 39.6°

Lens Information: Focal Length / Field of View

50mm / 39.6° >

35mm / 54.4° >

24mm / 73.7° >

Location	Description	Photography Date	Field of view	35mm equivalent	Distance to site boundary	Camera model	Reference
View 6 Existing	Looking West from Walkinstown Green	29/01/25	73.7°	24mm	680m	Canon EOS 5DS	1652



Winter View of proposed

< 24mm / 73.7° < 35mm / 54.4° < 50mm / 39.6° Lens Information: Focal Length / Field of View 50mm / 39.6° > 35mm / 54.4° > 24mm / 73.7° >

Location	Description	Photography Date	Field of view	35mm equivalent	Distance to site boundary	Camera model	Reference
View 6 Proposed	Looking West from Walkinstown Green	29/01/25	73.7°	24mm	680m	Canon EOS 5DS	1652



Summer View of existing

< 24mm / 73.7° < 35mm / 54.4° < 50mm / 39.6° Lens Information: Focal Length / Field of View 50mm / 39.6° > 35mm / 54.4° > 24mm / 73.7° >

Location	Description	Photography Date	Field of view	35mm equivalent	Distance to site boundary	Camera model	Reference
View 7 Existing	Looking Nth West Walkinstown Ave. & Walkinstown Grn.	12/08/24	73.7°	24mm	615m	Canon EOS 5DS	7322



Summer View of proposed

< 24mm / 73.7° | < 35mm / 54.4° | < 50mm / 39.6° | Lens Information: Focal Length / Field of View | 50mm / 39.6° > | 35mm / 54.4° > | 24mm / 73.7° >

Location	Description	Photography Date	Field of view	35mm equivalent	Distance to site boundary	Camera model	Reference
View 7 Proposed	Looking Nth West Walkinstown Ave. & Walkinstown Grn.	12/08/24	73.7°	24mm	615m	Canon EOS 5DS	7322



Winter View of existing

< 24mm / 73.7° | < 35mm / 54.4° | < 50mm / 39.6° | Lens Information: Focal Length / Field of View | 50mm / 39.6° > | 35mm / 54.4° > | 24mm / 73.7° >

Location	Description	Photography Date	Field of view	35mm equivalent	Distance to site boundary	Camera model	Reference
View 7 Existing	Looking Nth West Walkinstown Ave. & Walkinstown Grn.	29/01/25	73.7°	24mm	615m	Canon EOS 5DS	1647



Winter View of proposed

< 24mm / 73.7° | < 35mm / 54.4° | < 50mm / 39.6° | Lens Information: Focal Length / Field of View | 50mm / 39.6° > | 35mm / 54.4° > | 24mm / 73.7° >

Location	Description	Photography Date	Field of view	35mm equivalent	Distance to site boundary	Camera model	Reference
View 7 Proposed	Looking Nth West Walkinstown Ave. & Walkinstown Grn.	29/01/25	73.7°	24mm	615m	Canon EOS 5DS	1647



Summer View of existing

< 24mm / 73.7° < 35mm / 54.4° < 50mm / 39.6° Lens Information: Focal Length / Field of View 50mm / 39.6° > 35mm / 54.4° > 24mm / 73.7° >

Location	Description	Photography Date	Field of view	35mm equivalent	Distance to site boundary	Camera model	Reference
View 8 Existing	Looking Nth from Walkinstown Ave Park	12/08/24	73.7°	24mm	440m	Canon EOS 5DS	7334



Summer View of proposed

< 24mm / 73.7° < 35mm / 54.4° < 50mm / 39.6° Lens Information: Focal Length / Field of View 50mm / 39.6° > 35mm / 54.4° > 24mm / 73.7° >

Location	Description	Photography Date	Field of view	35mm equivalent	Distance to site boundary	Camera model	Reference
View 8 Proposed	Looking Nth from Walkinstown Ave Park	12/08/24	73.7°	24mm	440m	Canon EOS 5DS	7334



Winter View of existing

< 24mm / 73.7° < 35mm / 54.4° < 50mm / 39.6° Lens Information: Focal Length / Field of View 50mm / 39.6° > 35mm / 54.4° > 24mm / 73.7° >

Location	Description	Photography Date	Field of view	35mm equivalent	Distance to site boundary	Camera model	Reference
View 8 Existing	Looking Nth from Walkinstown Ave Park	29/01/25	73.7°	24mm	440m	Canon EOS 5DS	1638



Winter View of proposed

< 24mm / 73.7° < 35mm / 54.4° < 50mm / 39.6° Lens Information: Focal Length / Field of View 50mm / 39.6° > 35mm / 54.4° > 24mm / 73.7° >

Location	Description	Photography Date	Field of view	35mm equivalent	Distance to site boundary	Camera model	Reference
View 8 Proposed	Looking Nth from Walkinstown Ave Park	29/01/25	73.7°	24mm	440m	Canon EOS 5DS	1638



Summer View of existing

< 24mm / 73.7°

< 35mm / 54.4°

< 50mm / 39.6°

Lens Information: Focal Length / Field of View

50mm / 39.6° >

35mm / 54.4° >

24mm / 73.7° >

Location	Description	Photography Date	Field of view	35mm equivalent	Distance to site boundary	Camera model	Reference
View 9 Existing	Looking Nth from Walkinstown Ave Park	12/08/24	73.7°	24mm	225m	Canon EOS 5DS	7329



Summer View of proposed

< 24mm / 73.7° < 35mm / 54.4° < 50mm / 39.6° Lens Information: Focal Length / Field of View 50mm / 39.6° > 35mm / 54.4° > 24mm / 73.7° >

Location	Description	Photography Date	Field of view	35mm equivalent	Distance to site boundary	Camera model	Reference
View 9 Proposed	Looking Nth from Walkinstown Ave Park	12/08/24	73.7°	24mm	225m	Canon EOS 5DS	7329



Winter View of existing

< 24mm / 73.7° | < 35mm / 54.4° | < 50mm / 39.6° | Lens Information: Focal Length / Field of View | 50mm / 39.6° > | 35mm / 54.4° > | 24mm / 73.7° > |

Location	Description	Photography Date	Field of view	35mm equivalent	Distance to site boundary	Camera model	Reference
View 9 Existing	Looking Nth from Walkinstown Ave Park	29/01/25	73.7°	24mm	225m	Canon EOS 5DS	1631



< 24mm / 73.7°

< 35mm / 54.4°

< 50mm / 39.6°

Lens Information: Focal Length / Field of View

50mm / 39.6° >

35mm / 54.4° >

24mm / 73.7° >

Location	Description	Photography Date	Field of view	35mm equivalent	Distance to site boundary	Camera model	Reference
View 9 Proposed	Looking Nth from Walkinstown Ave Park	29/01/25	73.7°	24mm	225m	Canon EOS 5DS	1631



Summer View of existing

< 24mm / 73.7° < 35mm / 54.4° < 50mm / 39.6° Lens Information: Focal Length / Field of View 50mm / 39.6° > 35mm / 54.4° > 24mm / 73.7° >

Location	Description	Photography Date	Field of view	35mm equivalent	Distance to site boundary	Camera model	Reference
View 10 Existing	Looking Nth East from Robinhood Road	12/08/24	73.7°	24mm	610m	Canon EOS 5DS	7340



Summer View of proposed

< 24mm / 73.7° < 35mm / 54.4° < 50mm / 39.6° Lens Information: Focal Length / Field of View 50mm / 39.6° > 35mm / 54.4° > 24mm / 73.7° >

Location	Description	Photography Date	Field of view	35mm equivalent	Distance to site boundary	Camera model	Reference
View 10 Proposed	Looking Nth East from Robinhood Road	12/08/24	73.7°	24mm	610m	Canon EOS 5DS	7340



Winter View of existing

< 24mm / 73.7° < 35mm / 54.4° < 50mm / 39.6° Lens Information: Focal Length / Field of View 50mm / 39.6° > 35mm / 54.4° > 24mm / 73.7° >

Location	Description	Photography Date	Field of view	35mm equivalent	Distance to site boundary	Camera model	Reference
View 10 Existing	Looking Nth East from Robinhood Road	29/01/25	73.7°	24mm	610m	Canon EOS 5DS	1565



Winter View of proposed

< 24mm / 73.7° < 35mm / 54.4° < 50mm / 39.6° Lens Information: Focal Length / Field of View 50mm / 39.6° > 35mm / 54.4° > 24mm / 73.7° >

Location	Description	Photography Date	Field of view	35mm equivalent	Distance to site boundary	Camera model	Reference
View 10 Proposed	Looking Nth East from Robinhood Road	29/01/25	73.7°	24mm	610m	Canon EOS 5DS	1565



Summer View of existing

< 24mm / 73.7° < 35mm / 54.4° < 50mm / 39.6° Lens Information: Focal Length / Field of View 50mm / 39.6° > 35mm / 54.4° > 24mm / 73.7° >

Location	Description	Photography Date	Field of view	35mm equivalent	Distance to site boundary	Camera model	Reference
View 11 Existing	Looking East from Long Mile Road	12/08/24	73.7°	24mm	280m	Canon EOS 5DS	7406



Summer View of proposed

< 24mm / 73.7° | < 35mm / 54.4° | < 50mm / 39.6° | Lens Information: Focal Length / Field of View | 50mm / 39.6° > | 35mm / 54.4° > | 24mm / 73.7° > |

Location	Description	Photography Date	Field of view	35mm equivalent	Distance to site boundary	Camera model	Reference
View 11 Proposed	Looking East from Long Mile Road	12/08/24	73.7°	24mm	280m	Canon EOS 5DS	7406



Summer View depicting massing of future CITY EDGE PROJECT

< 24mm / 73.7° < 35mm / 54.4° < 50mm / 39.6° Lens Information: Focal Length / Field of View 50mm / 39.6° > 35mm / 54.4° > 24mm / 73.7° >

Location	Description	Photography Date	Field of view	35mm equivalent	Distance to site boundary	Camera model	Reference
V11 Cumulative	Looking East from Long Mile Road	12/08/24	73.7°	24mm	280m	Canon EOS 5DS	7406



Winter View of existing

< 24mm / 73.7° < 35mm / 54.4° < 50mm / 39.6° Lens Information: Focal Length / Field of View 50mm / 39.6° > 35mm / 54.4° > 24mm / 73.7° >

Location	Description	Photography Date	Field of view	35mm equivalent	Distance to site boundary	Camera model	Reference
View 11 Existing	Looking East from Long Mile Road	29/01/25	73.7°	24mm	280m	Canon EOS 5DS	1583



Winter View of proposed

< 24mm / 73.7° < 35mm / 54.4° < 50mm / 39.6° Lens Information: Focal Length / Field of View 50mm / 39.6° > 35mm / 54.4° > 24mm / 73.7° >

Location	Description	Photography Date	Field of view	35mm equivalent	Distance to site boundary	Camera model	Reference
View 11 Proposed	Looking East from Long Mile Road	29/01/25	73.7°	24mm	280m	Canon EOS 5DS	1583



Winter View depicting massing of future CITY EDGE PROJECT

< 24mm / 73.7° < 35mm / 54.4° < 50mm / 39.6° Lens Information: Focal Length / Field of View 50mm / 39.6° > 35mm / 54.4° > 24mm / 73.7° >

Location	Description	Photography Date	Field of view	35mm equivalent	Distance to site boundary	Camera model	Reference
V11 Cumulative	Looking East from Long Mile Road	29/01/25	73.7°	24mm	280m	Canon EOS 5DS	1583



Summer View of existing

< 24mm / 73.7° < 35mm / 54.4° < 50mm / 39.6° Lens Information: Focal Length / Field of View 50mm / 39.6° > 35mm / 54.4° > 24mm / 73.7° >

Location	Description	Photography Date	Field of view	35mm equivalent	Distance to site boundary	Camera model	Reference
View 12 Existing	Looking West from Long Mile Road / Walkinstown Ave	12/08/24	73.7°	24mm	240m	Canon EOS 5DS	7359



Summer View of proposed

< 24mm / 73.7° < 35mm / 54.4° < 50mm / 39.6° Lens Information: Focal Length / Field of View 50mm / 39.6° > 35mm / 54.4° > 24mm / 73.7° >

Location	Description	Photography Date	Field of view	35mm equivalent	Distance to site boundary	Camera model	Reference
View 12 Proposed	Looking West from Long Mile Road / Walkinstown Ave	12/08/24	73.7°	24mm	240m	Canon EOS 5DS	7359



Summer View depicting massing of future CITY EDGE PROJECT

< 24mm / 73.7° < 35mm / 54.4° < 50mm / 39.6° Lens Information: Focal Length / Field of View 50mm / 39.6° > 35mm / 54.4° > 24mm / 73.7° >

Location	Description	Photography Date	Field of view	35mm equivalent	Distance to site boundary	Camera model	Reference
View 12 Proposed	Looking West from Long Mile Road / Walkinstown Ave	12/08/24	73.7°	24mm	240m	Canon EOS 5DS	7359



Winter View of existing

< 24mm / 73.7° < 35mm / 54.4° < 50mm / 39.6° Lens Information: Focal Length / Field of View 50mm / 39.6° > 35mm / 54.4° > 24mm / 73.7° >

Location	Description	Photography Date	Field of view	35mm equivalent	Distance to site boundary	Camera model	Reference
View 12 Existing	Looking West from Long Mile Road / Walkinstown Ave	29/01/25	73.7°	24mm	240m	Canon EOS 5DS	1616



Winter View of proposed

< 24mm / 73.7° < 35mm / 54.4° < 50mm / 39.6° Lens Information: Focal Length / Field of View 50mm / 39.6° > 35mm / 54.4° > 24mm / 73.7° >

Location	Description	Photography Date	Field of view	35mm equivalent	Distance to site boundary	Camera model	Reference
View 12 Proposed	Looking West from Long Mile Road / Walkinstown Ave	29/01/25	73.7°	24mm	240m	Canon EOS 5DS	1616



Winter View depicting massing of future CITY EDGE PROJECT

< 24mm / 73.7° < 35mm / 54.4° < 50mm / 39.6° Lens Information: Focal Length / Field of View 50mm / 39.6° > 35mm / 54.4° > 24mm / 73.7° >

Location	Description	Photography Date	Field of view	35mm equivalent	Distance to site boundary	Camera model	Reference
View 12 Proposed	Looking West from Long Mile Road / Walkinstown Ave	29/01/25	73.7°	24mm	240m	Canon EOS 5DS	1616



Winter View of existing

< 24mm / 73.7° < 35mm / 54.4° < 50mm / 39.6° Lens Information: Focal Length / Field of View 50mm / 39.6° > 35mm / 54.4° > 24mm / 73.7° >

Location	Description	Photography Date	Field of view	35mm equivalent	Distance to site boundary	Camera model	Reference
View 13 Existing	Looking East from Robinhood Road	29/01/25	73.7°	24mm	87m	Canon EOS 5DS	1555



Winter View of proposed

< 24mm / 73.7° < 35mm / 54.4° < 50mm / 39.6° Lens Information: Focal Length / Field of View 50mm / 39.6° > 35mm / 54.4° > 24mm / 73.7° >

Location	Description	Photography Date	Field of view	35mm equivalent	Distance to site boundary	Camera model	Reference
View 13 Proposed	Looking East from Robinhood Road	29/01/25	73.7°	24mm	87m	Canon EOS 5DS	1555



Winter View of existing

< 24mm / 73.7° < 35mm / 54.4° < 50mm / 39.6° Lens Information: Focal Length / Field of View 50mm / 39.6° > 35mm / 54.4° > 24mm / 73.7° >

Location	Description	Photography Date	Field of view	35mm equivalent	Distance to site boundary	Camera model	Reference
View 14 Existing	Looking South West on Parkmore Estate Road	03/02/25	73.7°	24mm	13m	Canon EOS 5DS	1856



Winter View of proposed

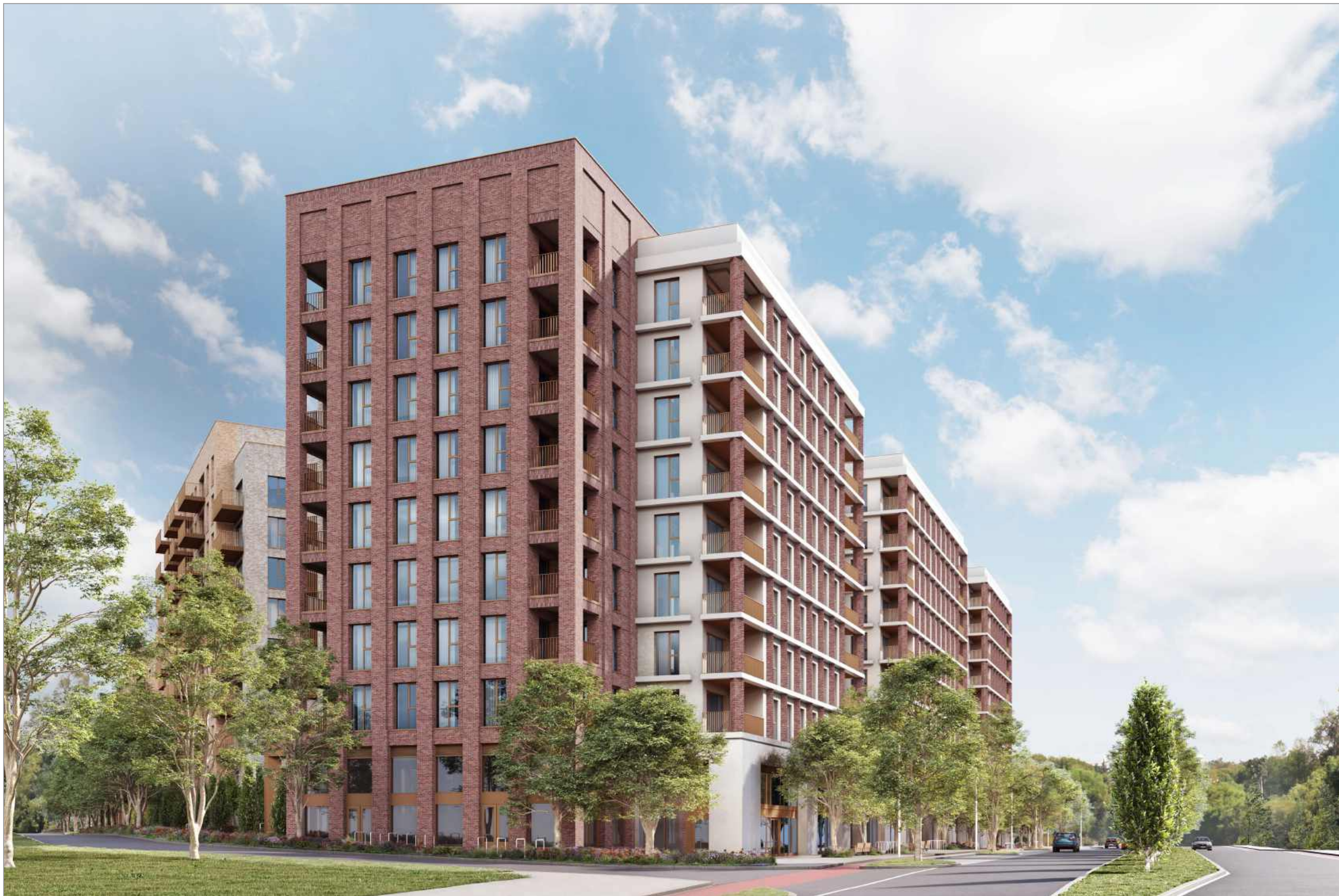
< 24mm / 73.7° | < 35mm / 54.4° | < 50mm / 39.6° | Lens Information: Focal Length / Field of View | 50mm / 39.6° > | 35mm / 54.4° > | 24mm / 73.7° > |

Location	Description	Photography Date	Field of view	35mm equivalent	Distance to site boundary	Camera model	Reference
View 14 Proposed	Looking South West on Parkmore Estate Road	03/02/25	73.7°	24mm	13m	Canon EOS 5DS	1856



Location
CGI 1









Location
CGI 5