

4.6 Courtyard B

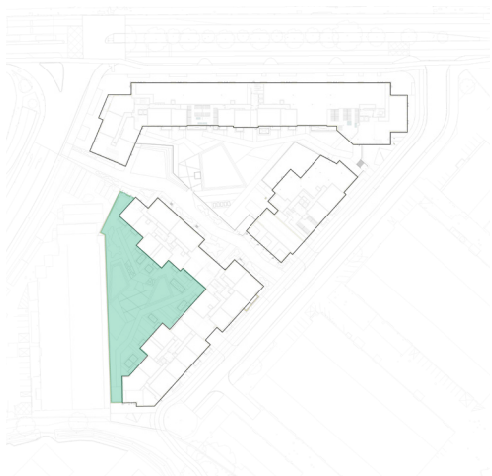
Podium Garden

The angular crossing desire lines of Courtyard B continues the concept with a purposeful line of movement within the courtyard and the secondary passages aims to connect the core entrances within the blocks.

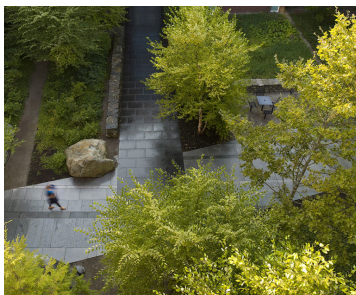
The courtyard space encourages leisure and social interaction with lawn areas being flexible in nature, thereby assisting in catering for the communal open space needs of the residents of these blocks. Natural play elements are woven into the landscape fabric with stepping stones, logs and flexible lawn space for kick-about and yoga. The formal play area features a miniature climbing wall which responds to the change in elevation across the podium slab.

The courtyards will be secured with low hedging at 1.1m-1.2m in height. A railing will be incorporated in the centre line of the hedge, creating a visual screen and an onsecured physical barrier.. Tree planting will also be provided, with the canopy raised, thereby creating a panoramic view in and out of the courtyard.

Typically the the ground floor apartments will have a private amenity space with a minium 1.5m wide defensible space, with direct access out onto the courtyard. The defensible space will typically serve as a landscaped physical and visual buffer to include evergreen hedging and gravel strip for servicing.



Location Plan



Terrace Gardens



Herbaceous Shrub Planting



Section through Courtyard B



4.6 Courtyard B
Podium Garden - 3D View

