

4.5 Courtyard A

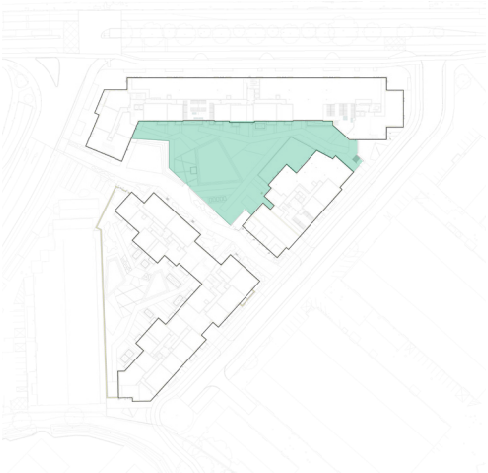
Podium Garden

The Courtyard A strives to bring nature as closely as possible to the building, creating a sense of living with nature. In a bid to encourage a greater sense of well-being and appreciation for the outdoors, the courtyard provides a lush green immersive experience, carved out between the transitional routes to create a series of spaces to include active + passive programme. In doing so, ‘moments’ for contemplation, leisure use and socialising in groups of varying sizes are created.

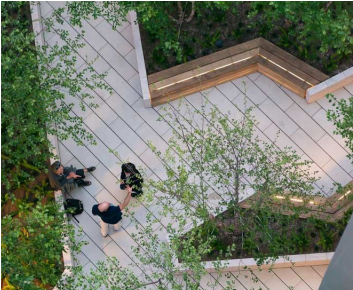
The landscape lends itself to exploration and ‘getting lost’ within the geometry of the courtyard with angular planters adding to space definition and visual interest, thereby fortifying the landscape expression in three dimensional manner. The courtyard permeates the design - with obtuse angled paths leading to secret garden spaces for contemplation and opening into lush lawn for playing.

The podium offers a visually appealing green space for those walking along the west-east central public link between Robin Hood Road and Parkmore Industrial Road.

The garden on the podium will be designed with low water usage and wind-resistant plants, featuring large native shrubs and small trees.



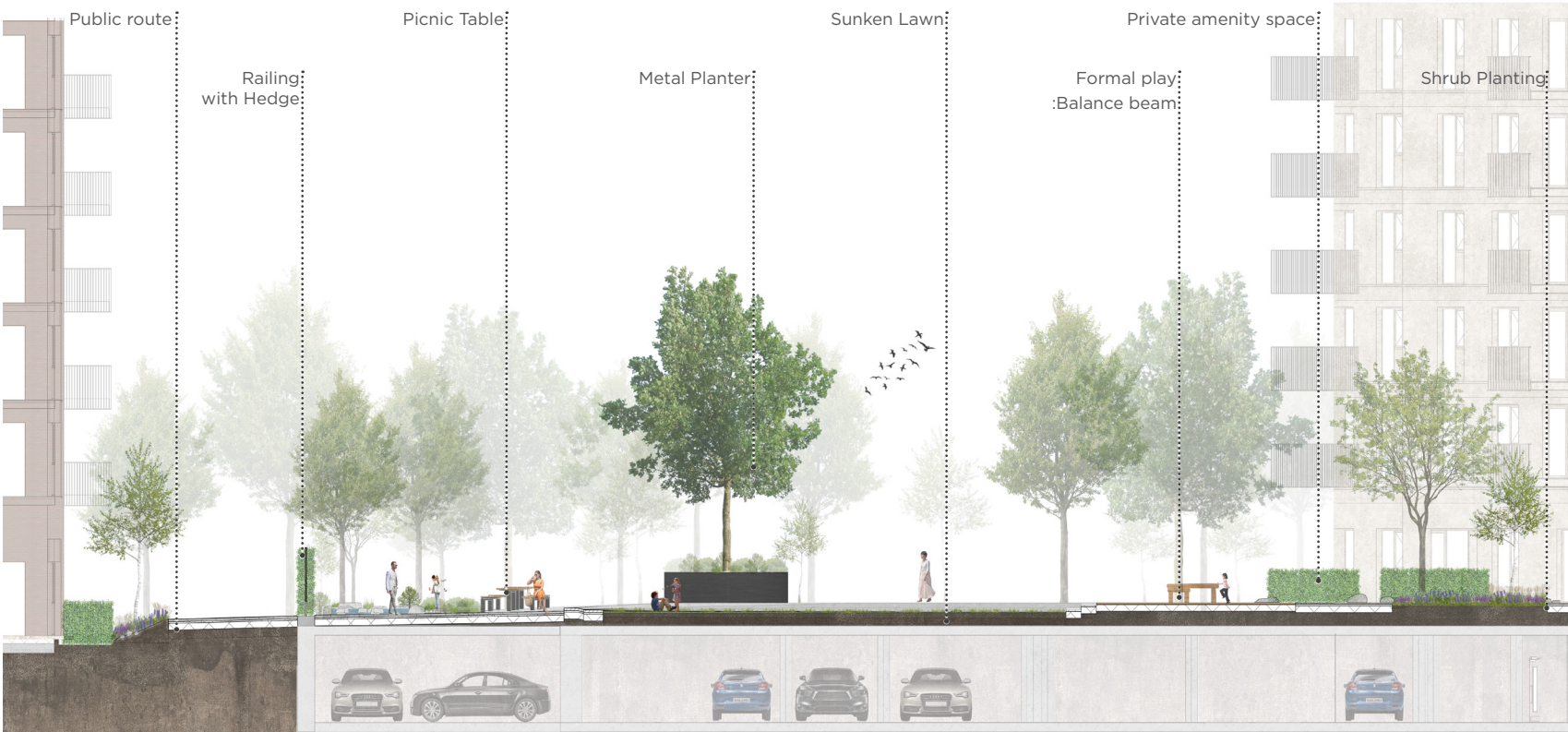
Location Plan



Meeting Spaces



Intersecting Plants



Section through Courtyard A



Legend

- 01 Steps
- 02 Seating
- 03 Lawn
- 04 Shrub
- 05 Path
- 06 Play
- 07 Exercise
- 08 Private Amenity Space
- 09 Allotments
- 10 Rain garden
- 11 Controlled access
- 12 Terrace
- 13 Public Route

4.5 Courtyard A
Podium Garden - 3D View

