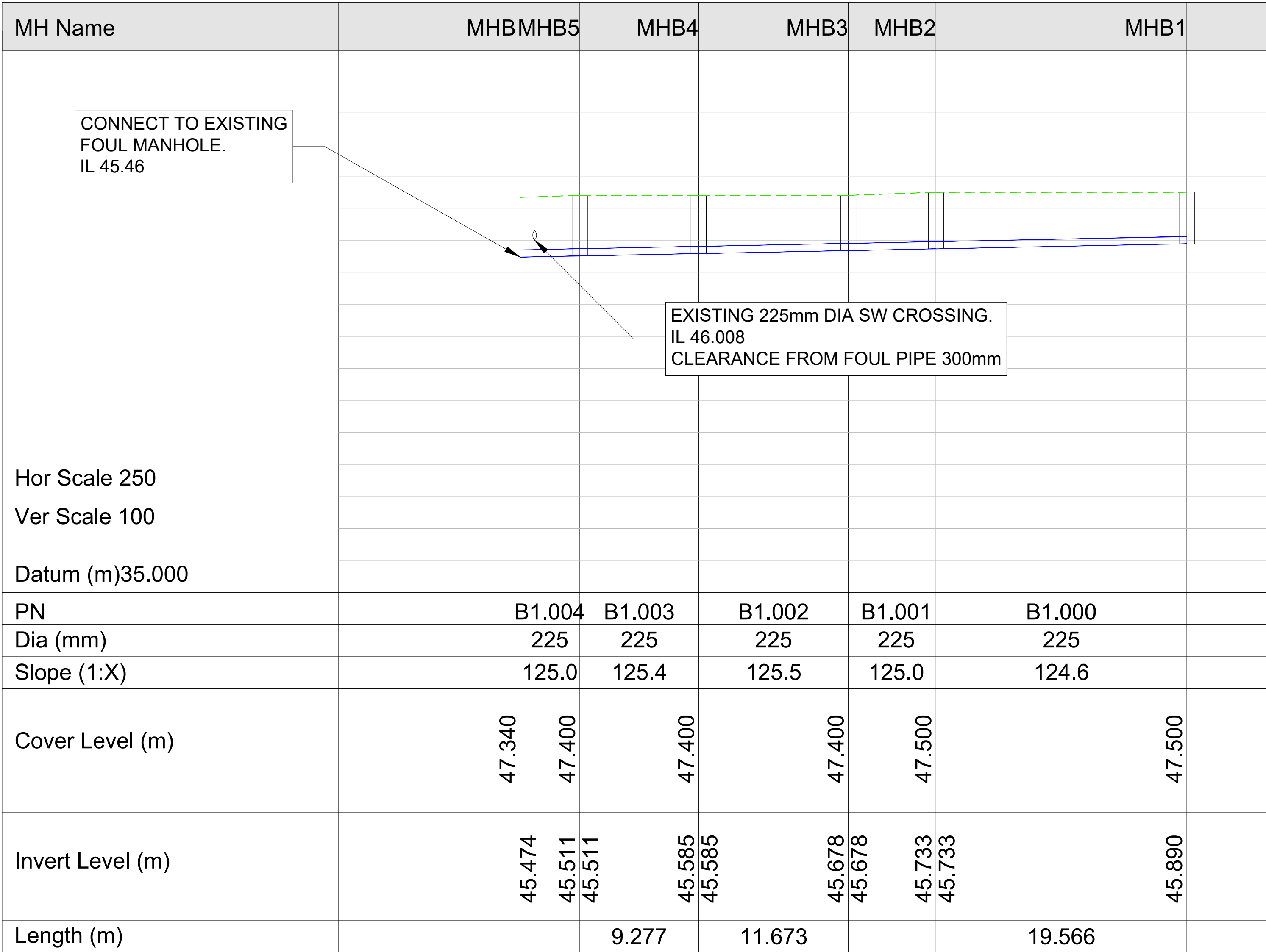


- NOTES
1.

THIS DRAWING IS TO BE READ IN CONJUNCTION WITH THE ENGINEERING SERVICES REPORT.
2.

ALL FOUL DRAINAGE TO BE CONSTRUCTED IN ACCORDANCE WITH UISCE EIREANN CODE OF PRACTICE FOR WATER INFRASTRUCTURE.
3.

FOUL SEWER PIPE MATERIAL SHALL BE IN ACCORDANCE WITH SECTION 3.9 OF WATER CODE OF PRACTICE.



LONGITUDINAL SECTION  
A1 @ HORIZONTAL SCALE 1:250 A1 @ VERTICAL SCALE 1:100

No.	Revision	Date	By	Chk'd	App'd
P01	ISSUED TO UISCE EIREANN	06/02/2025	MA	CMG	EOC
P02	ISSUED FOR PLANNING	18/02/2025	MA	CMG	EOC

ROD

ROUGHAN & O'DONOVAN

Consulting Engineers

Civil - Structural - Transportation - Environmental

Arena House, Arena Road, Sandyford, Dublin 18, Ireland

t +353 (0) 1 294 0800

f +353 (0) 1 294 0820

www.rod.ie

Drawn	Designed	Checked	Approved	Suitability Code - Description
MA	CMG	EOC	EOC	S4 - Stage Approval

Project Stage	PLANNING						
Project Title	PROPOSED RESIDENTIAL DEVELOPMENT, PARKMORE INDUSTRIAL ESTATE						
Drawing Title	Proposed Foul Drainage Long Sections Sheet 2						
Drawing Number	Project	Originator	Volume	Location	Type	Role	Number
	PIE	-	ROD	-	HDG	-	SW_AE - DR - CD - 30011
Scale (A1)	AS SHOWN	Date:	JANUARY 2025	Job No:	23.111	Rev:	P02